

What's new in SIMATIC IT UniCam Test Expert 11

electronics manufacturers to go from design to test and inspection in a matter of minutes or hours rather than days. With its fast, user-programmable nail/probe selection routine and complementary interactive tools, SIMATIC IT UniCam Test Expert 11 offers complete flexibility and control during fixture design for in-circuit test (ICT) and advanced flying probe selection. Further, it reduces the cost and time for new product introduction (NPI) and design changes for electronic printed circuit board (PCB) testing.

Improving short-test functionality for PCB testing

Benefits

- Improves short tests for the top and bottom side and different soldering technologies
- Provides updated technology for better performance, maintainability and upgradeability
- Supports the latest version of the Windows operating system

Summary

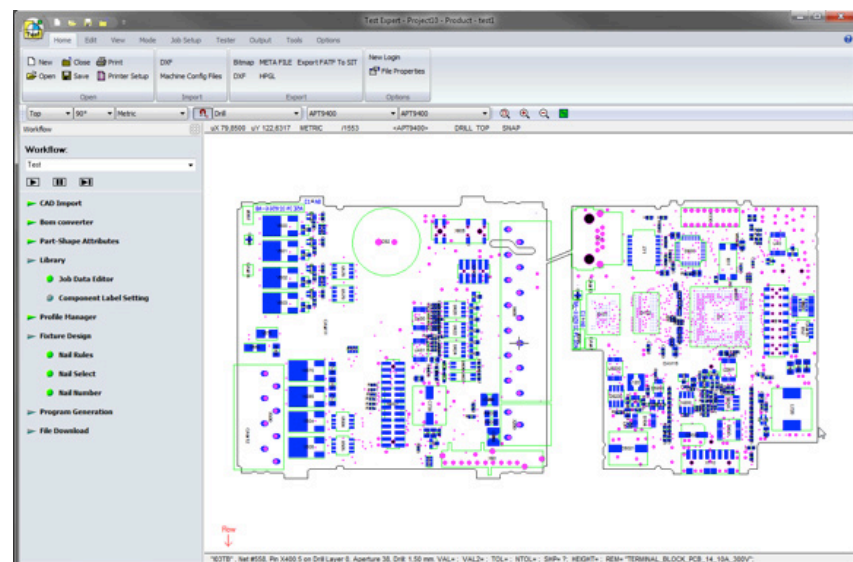
SIMATIC IT UniCam Test Expert is a leading test programming and design-for-test (DFT) software application in the electronics manufacturing industry. SIMATIC IT UniCam Test Expert 11 is a fully integrated solution that allows

Benefits

New benefits in SIMATIC IT UniCam Test Expert 11 include:

Short-test improvements

The short tool has been enhanced to allow users to define thresholds for wave and reflow solder. By using these



What's new in SIMATIC IT UniCam Test Expert 11

settings, the user will be able to control the short spacing threshold for the top side, bottom side or both. Depending on the solder process selected for each board side, the appropriate net spacing for that process will be used. These new settings will improve the results of the short tool.

Technology update

SIMATIC IT UniCam Test Expert 11 has been updated to include the latest version of compilers, which will improve its performance, maintainability and upgradeability.

Features

New features in SIMATIC IT UniCam Test Expert 11 include:

- Windows® 10 operating system support
- Zuken CR-8000 computer-aided design (CAD) interface
- IPC-2581B interface with test points
- Mentor Graphics ODB++ V8 support
- Version information report

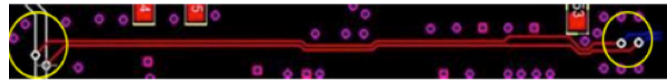
Windows 10 support

SIMATIC IT UniCam Test Expert 11 is now supported on the Windows 10 operating system.



Zuken CR-8000 CAD support

SIMATIC IT UniCam Test Expert 11 now has a parser to read and import the latest Zuken CR-8000 design files.



IPC-2581B CAD support

The IPC-2581B data format continues to provide the electronics industry with a standardized, safe and comprehensive method for transferring design data.

The goal of the IPC-2581 format is to enable the accurate, efficient data exchange of PCB and assemblies between designers and manufacturers using a single XML-based data exchange format. Siemens PLM Software is a member of the IPC-2581 consortium.

Mentor Graphics ODB++ V8 support

SIMATIC IT UniCam Test Expert 11 supports the latest version of the Mentor Graphics ODB++ intelligent data CAD format.

Version information report

The version information report has been enhanced to list each component the user has installed on his or her system for SIMATIC IT UniCam Test Expert 11. The report is divided into three sections: core, CAD and machine interfaces.

Component	Version	Installation Date	Installation Path
Siemens AG - SIMATIC IT	11.0.0.0	2016-11-24 10:00	C:\Program Files\Siemens\SIMATIC IT
Siemens AG - SIMATIC IT	11.0.0.0	2016-11-24 10:00	C:\Program Files\Siemens\SIMATIC IT
Siemens AG - SIMATIC IT	11.0.0.0	2016-11-24 10:00	C:\Program Files\Siemens\SIMATIC IT
Siemens AG - SIMATIC IT	11.0.0.0	2016-11-24 10:00	C:\Program Files\Siemens\SIMATIC IT
Siemens AG - SIMATIC IT	11.0.0.0	2016-11-24 10:00	C:\Program Files\Siemens\SIMATIC IT
Siemens AG - SIMATIC IT	11.0.0.0	2016-11-24 10:00	C:\Program Files\Siemens\SIMATIC IT
Siemens AG - SIMATIC IT	11.0.0.0	2016-11-24 10:00	C:\Program Files\Siemens\SIMATIC IT
Siemens AG - SIMATIC IT	11.0.0.0	2016-11-24 10:00	C:\Program Files\Siemens\SIMATIC IT
Siemens AG - SIMATIC IT	11.0.0.0	2016-11-24 10:00	C:\Program Files\Siemens\SIMATIC IT
Siemens AG - SIMATIC IT	11.0.0.0	2016-11-24 10:00	C:\Program Files\Siemens\SIMATIC IT
Siemens AG - SIMATIC IT	11.0.0.0	2016-11-24 10:00	C:\Program Files\Siemens\SIMATIC IT
Siemens AG - SIMATIC IT	11.0.0.0	2016-11-24 10:00	C:\Program Files\Siemens\SIMATIC IT
Siemens AG - SIMATIC IT	11.0.0.0	2016-11-24 10:00	C:\Program Files\Siemens\SIMATIC IT
Siemens AG - SIMATIC IT	11.0.0.0	2016-11-24 10:00	C:\Program Files\Siemens\SIMATIC IT
Siemens AG - SIMATIC IT	11.0.0.0	2016-11-24 10:00	C:\Program Files\Siemens\SIMATIC IT
Siemens AG - SIMATIC IT	11.0.0.0	2016-11-24 10:00	C:\Program Files\Siemens\SIMATIC IT
Siemens AG - SIMATIC IT	11.0.0.0	2016-11-24 10:00	C:\Program Files\Siemens\SIMATIC IT
Siemens AG - SIMATIC IT	11.0.0.0	2016-11-24 10:00	C:\Program Files\Siemens\SIMATIC IT
Siemens AG - SIMATIC IT	11.0.0.0	2016-11-24 10:00	C:\Program Files\Siemens\SIMATIC IT

Siemens PLM Software
www.siemens.com/plm

Contact: Accelonix Ltd
 Unit 2, McClintock Building
 Granta Park, Great Abington
 Cambridge, CB21 6GP
 Tel: 01223 659 965
 Email: sales@accelonix.co.uk

© 2017 Siemens Product Lifecycle Management Software Inc. Siemens, the Siemens logo and SIMATIC IT are registered trademarks of Siemens AG. Camstar, D-Cubed, Femap, Fibersim, Geolus, GO PLM, I-deas, JT, NX, Omneo, Parasolid, Simcenter, Solid Edge, Syncrofit, Teamcenter and Tecnomatix are trademarks or registered trademarks of Siemens Product Lifecycle Management Software Inc. or its subsidiaries in the United States and in other countries. Windows is a trademark or registered trademarks of Microsoft Corporation. All other trademarks, registered trademarks or service marks belong to their respective holders.
 63099-A5 5/17 A